



Topping off a storey with a happy ending

Trying to meet a definite brief that included ample storage for cars and a boat led to a flexible builder that created a residence perfect for years to come

Carol and Chris Jarvis knew what they wanted to build: a two-storey brick house on a corner block that would see them well into their retirement years. "We used to live on a huge block at Cromer that overlooked bushland, but we had a problem of storage," Chris says.

"We bought a campervan to drive around Australia and it was sitting on the street, and we have boats and there was nowhere to store them. They were out in the elements."

Perfect block

With that in mind, the couple started visiting display centres to see what their options were.

"We began to realise that project builders mostly build on slabs, which posed a problem as we wanted to build a five-car garage under the house," Chris says. "We eventually came across Hotondo Homes who would build a house on bearers and joists rather than a slab, which would allow excavation underneath."

Meanwhile Chris and Carol secured a large block of land in Stockland's Fernbrook Sanctuary in Warriewood

"We had some friends who had bought into the development. They love it and suggested we come and check it out," Chris says.

"We found a corner lot and that was that."

The couple had very specific requirements and soon realised a custom-built design was their best option.

"We wanted a garage underneath, 9.5m wide by 11.5m deep, and a guest wing downstairs with a separate entrance and open-plan living for aged parents."

Chris says they worked with the in-house architects at Hotondo Homes to develop the ultimate design.

"On the ground floor, we wanted the staircase to be

a feature with intricate detailing. We both love to cook so we spent a lot of time designing a kitchen," he says.

The granite kitchen features an island bench with additional benchspace curving along under the window. Upstairs, the main suite encompasses one corner.

"We wanted our bedroom area to be grand so we made it a big room, 6.5m x 5m, with a dressing room and ensuite. At the end of it, we turned one of the bedrooms into a parents' retreat with a balcony that overlooks Warriewood headland."

Interior challenge

For Chris and Carol the biggest challenge was selecting the interior colours and finishes.

"It was a learning curve," Chris says.

"We didn't realise you have to select everything, from the architraves to the door knobs, taps, sinks, light fittings and, of course, wall colours. It's a monstrous task. Hotondo provide an interior designer who walks you through exhibition homes and a sample room, but it takes hours. And it's heart wrenching, picking something from a sample and not knowing what it will actually look like in the home."

For the exterior, McWilliam blend bricks from PGH were selected, offset with rendered pillars at the entrance.

"We didn't want to render the whole house. It means too much maintenance in the future," Chris says.

"We're very pleased how the bricks turned out." ■

Jenny Ringland

● MORE INFORMATION

Hotondo Homes 1800 677 156. hotondo.com.au



Daily Telegraph
Saturday 7/3/2009
Page: 16
Section: Home
Region: Sydney Circulation: 325,000
Type: Capital City Daily
Size: 1,135.72 sq.cms.
Published: MTWTFS-

Brief: HOTONDOH
Page 2 of 4



FACT FILE

THE BRIEF

Build a two-storey house with an underground five-car garage

THE OWNERS

Chris and Carol Jarvis

THE BUILDER

Hotondo Homes





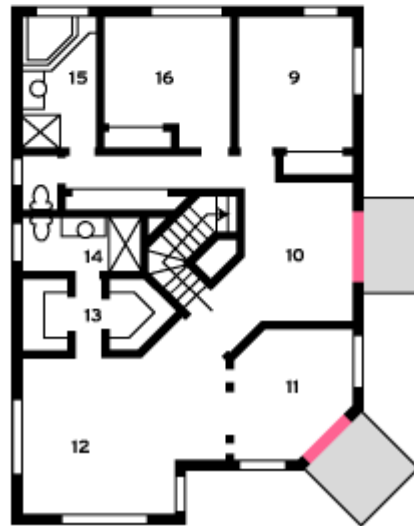
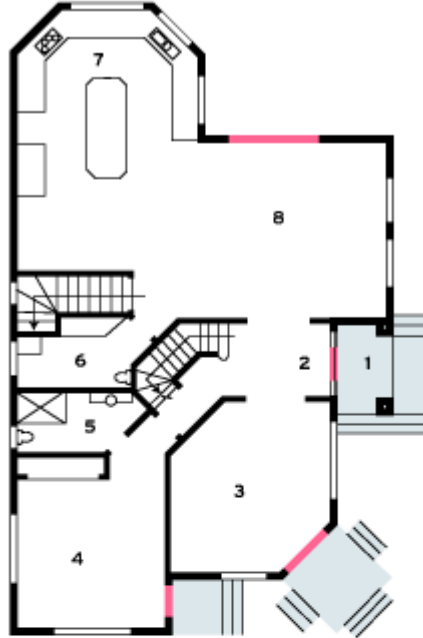
A A great deal of thought went into building a spectacular kitchen **B** The spacious kitchen and dining area **C** The formal lounge room **D** A raised bath adds interest **E** The main bedroom has a dressing room and ensuite **F** Chris and Carol worked with the architects to achieve their ultimate design





Daily Telegraph
Saturday 7/3/2009
Page: 16
Section: Home
Region: Sydney Circulation: 325,000
Type: Capital City Daily
Size: 1,135.72 sq.cms.
Published: MTWTFS-

Brief: HOTONDOH
Page 4 of 4



GROUND FLOOR 1 Porch 2 Entry 3 Living 4 Guest
 5 Bathroom 6 Laundry 7 Kitchen 8 Family

FIRST FLOOR 9 Bedroom 10 Sitting room
 11 Retreat 12 Main bedroom 13 Walk-in robe
 14 Ensuite 15 Bathroom 16 Bedroom